



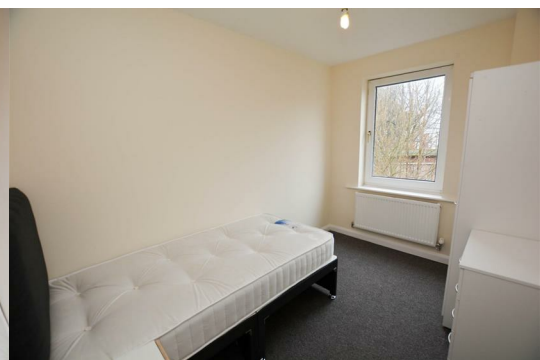
31 The Avenue

, Leigh, WN7 1ET

£90 Per Week



****ALL BILLS INCLUDED**** Sapphire Homes are delighted to offer For Rent this furnished single bedroom in 4 person house share that is located in the town centre of Leigh and offers excellent location for amenities as well as transport and commuter links. The property has new furnishings and fixtures throughout and is warmed by Gas Central Heating and also benefits from double glazing throughout and a modern tasteful décor. There is a generous kitchen / dining area and two bathrooms with three piece shower suites and with the large bedrooms these rooms will prove to be popular so early viewing is highly recommended to appreciate in full. The property is perfect for professional tenants and the owner will not accept any Pets or Smokers.



GROUND FLOOR

Entrance / Hallway

Bedroom 1

Kitchen / Dining

Bathroom 1

FIRST FLOOR

Landing

Bedroom 2

Bedroom 3

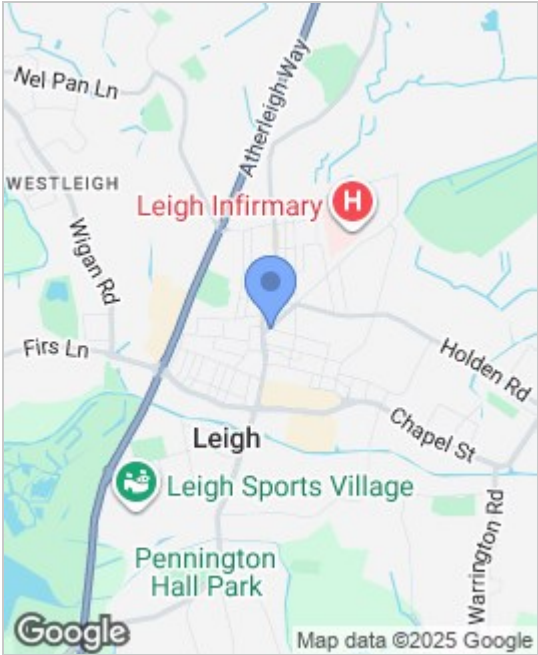
Bathroom 2

Bedroom 4

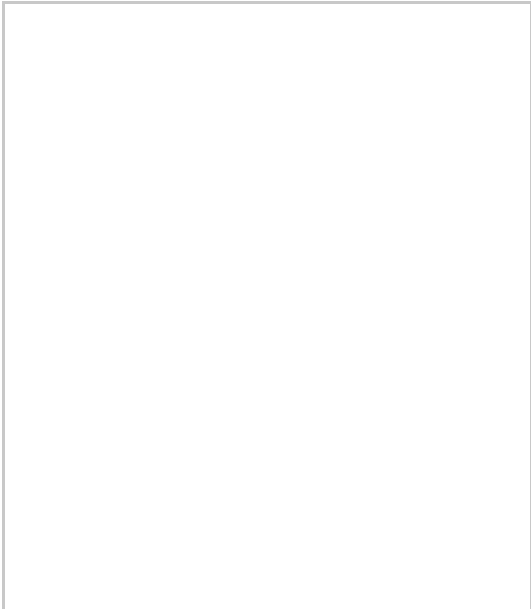
EXTERNAL

Rear Garden

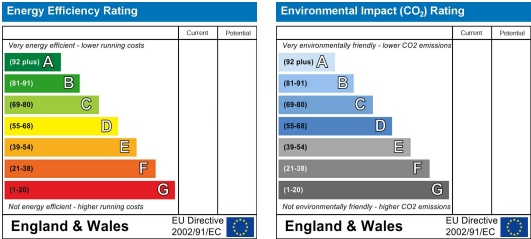
Area Map



Floor Plans



Energy Efficiency Graph



These particulars, whilst believed to be accurate are set out as a general outline only for guidance and do not constitute any part of an offer or contract. Intending purchasers should not rely on them as a representation of fact, but must satisfy themselves by inspection or otherwise as to their accuracy. No person in this firms employment has the authority to make or give any representation or warranty in relation to the property.

